

# Journey Beyond Ordinary



**GO AND CHANGE**

**GN6**



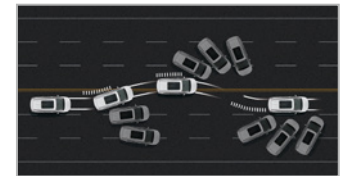
**SHARP ELEGANCE**  
Stand out with the sculpted design and striking details.



**SPACIOUS CABIN**  
Savor the luxury of the large, open cabin and the power sunroof.



**SUPERIOR PERFORMANCE**  
Welcome the driving dynamics with the Turbo Petrol Engine and AISIN 6-speed Automatic Transmission.



**SAFE TRAVELS**  
Be guided by intuitive safety technologies and driver-assistive features.

| SPECIFICATIONS & FEATURES   | 270T  |
|---|---|
|   | GE  |
| <b>DIMENSIONS</b>   |   |
| Length x Width x Height   | 4780 x 1860 x 1730 mm   |
| Wheelbase   | 2810 mm   |
| Trunk Capacity  | 324 L / 1100 L  |
| Fuel Tank Capacity  | 52 L  |
| Curb Weight   | 1615  |
| Seating Capacity  | 7   |
| <b>MECHANICAL/PERFORMANCE</b>   |   |
| Engine Type   | Turbo Petrol  |
| Displacement  | 1495 cc   |
| Max Output  | 169 hp  |
| Max Torque  | 265 Nm  |
| Transmission  | 6-speed Automatic Transmission (AT)                                       |
| Fuel Consumption Under Comprehensive Road Conditions                  | 7.4 L / 100 km  |
| Suspension System   | Front: McPherson Independent Suspension<br>Rear: Twisting Beam Suspension |
| Steering System   | Electric Power Steering (EPS)   |
| Brakes  | Front: Ventilated Disc Brakes<br>Rear: Disc Brakes                        |
| Emission Standard   | Euro V  |
| <b>EXTERIOR</b>   |   |
| 16" Aluminum Alloy Wheels + 215/60 Tires                              | •   |
| Temporary Spare Wheel   | •   |
| Halogen Headlamps (Alarm for On / Follow-Me-Home Function)            | •   |
| Connected LED Tail Lights   | •   |
| Front Fog Lights  | •   |
| Power Sunroof with Jam Protection                                     | •   |
| Power Adjustable Side Mirrors   | •   |
| <b>INTERIOR</b>   |   |
| Air Conditioning with Air Filter                                      | •   |
| Rear Vent Outlets   | •   |
| Second Row Airflow Control Panel                                      | •   |
| Multi-functional Steering Wheel                                       | •   |
| Leatherette-trimmed Seats   | •   |
| 6-way Adjustable Driver's Seat  | •   |
| 4-way Adjustable Front Passenger's Seat                               | •   |
| Second Row Independent Seats (4-way Adjust) with Headrest and Armrest | •   |
| Split and Recline Third Row Seats                                     | •   |
| One-touch Up and Down Driver's Window (Anti-pinch)                    | •   |
| 12V Power Outlets (Front and Cargo)                                   | •   |
| Cargo Area Lighting   | •   |
| <b>SAFETY</b>   |   |
| Dual Front Airbags  | •   |
| Front Side Airbags  | •   |
| Electronic Stability Program (ESP)                                    | •   |
| Traction Control System (TCS)   | •   |
| Hill-start Hold Control (HHC)   | •   |
| Electric brakeforce Distribution (EBD)                                | •   |
| Anti-lock Braking System (ABS)  | •   |
| Electronic Parking Brake (EPB) with Autohold                          | •   |
| ISOFIX Child Safety Seat Anchors                                      | •   |
| Second row Child Safety Door Lock                                     | •   |
| Engine Immobilizer (with Anti-theft Alarm)                            | •   |

| SPECIFICATIONS & FEATURES             | 270T |
|---------------------------------------|------|
|                                       | GE   |
| <b>ENTERTAINMENT &amp; TECHNOLOGY</b> |      |
| 8" Color LCD Screen Display           | •    |
| 7" Color LCD Instrument Panel         | •    |
| Number of Speakers                    | 6    |
| Speed Based Volume Adjustment         | •    |
| Cruise Control                        | •    |
| Passive Entry Passive Start (PEPS)    | •    |
| Parking Sensors                       | •    |
| Rear View Camera                      | •    |
| ECO Drive Mode                        | •    |

#### Notes:

1. "•" - Standard, "—" - N/A, "o" - Optional
2. GAC MOTOR strives to build vehicles to match customer interest and thus they typically are built with popular options and option packages. Not all options or option packages are available separately and some may not be available in all regions of the country. Please consult your local GAC MOTOR dealer for more detailed information on available options or option packages, including configurations, service, parts and accessories.
3. Seatbelts should be worn at all times.
4. This brochure is for presentation purpose only. The included information, pictures, illustrations, features, design, performance, dimensions herein are intended only as a general guidance to assist the buyer to form an initial view of the offered products and its specifications, which might not correspond completely to a certain category. Some vehicles are shown with available equipment.
5. All information presented herein is based on data available at the time of publication and is subject to change without prior notice and pertains specifically to American, Asian, African areas only (may differ in other areas).
6. The vehicle shown in the brochure does not completely align with the actual model. Please contact your local GAC MOTOR dealer for more details about the actual available models in your region.
7. The GAC trademark mark, vehicle model names, vehicle body designs and other marks and designs appearing in the brochure are the IP rights of GAC MOTOR, its subsidiaries, affiliates or licensors.

© 2023 GAC MOTOR. All rights reserved.

### THREE VIEWS



### INTERIOR



LIGHT

### COLORS



CRYSTAL WHITE



ELEGANT BLACK